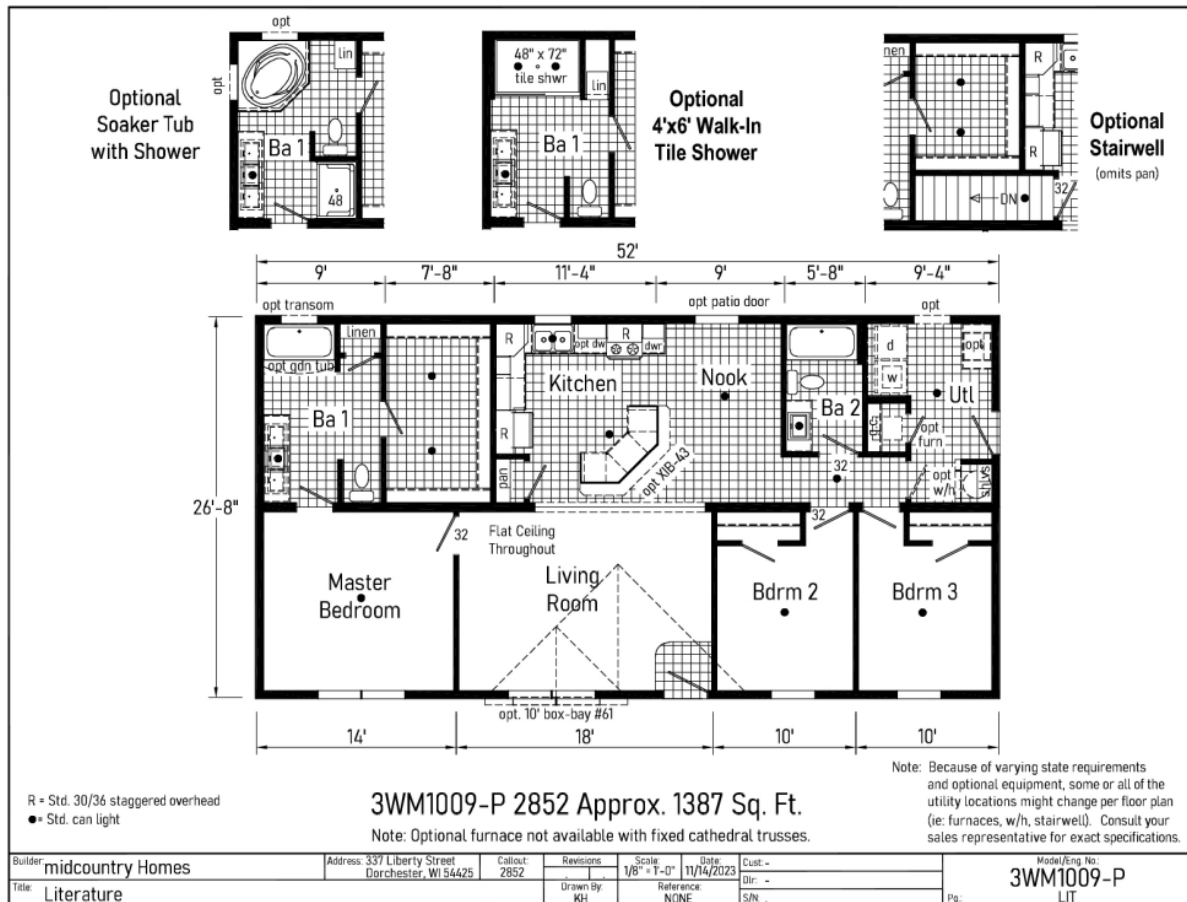


PRINTABLE INFO SHEET

Series: Westlake MOD

Model: 3WM1009-P



About This Model

Style: MOD / Bedrooms: 3 / Bathrooms: 2 / Square Feet: 1387

CUSTOMER CONTACT

Notes:

PRINTABLE INFO SHEET

Series: Westlake MOD

Model: 3WM1009-P



Standards & Features

Interior

Primed Drywall Throughout Orange Peel Finish
8'-0" Flat Ceiling Orange Peel Finish
Recessed LED Lights
Pendant Dining Room Light
2-Panel White Painted Craftsman Interior Doors
Pre-Hung Doors with Mortise Hinges
Metal Interior Passage Sets
Window Valances
1" Mini Blinds Throughout
Smoke Detectors with Battery Back-Up
Wire Shelving in Closets
White Painted Mouldings Throughout
Flat 2 1/4" Window and Door Casing
Flat 3 1/2" Baseboards
Cove Moulding

Exterior

Black Gatsby Light at Front and Rear Door
Vinyl Dutch Lap Siding
Double Low-E Vinyl Insulated Windows - Mulled w/ Argon
Lineals Front Door Side
GFI-Protected Exterior Receptacle Each Door
O.S.B. Wall and Roof Sheathing
Fixed Roof
12" Overhangs and Eaves
4" Overhangs and 12" Eaves (Single)
3-Tab Shingles
Ridge Vent Roof Ventilation System
Ice Shield
3/0x6/8 Fiberglass 6-Panel Front and Rear
Door w/ Deadbolt Keyed Alike Locksets

Exterior (continued)

Wind Wrap

Kitchen

Cityscape Staggered Overhead Cabinetry
Empire Brushed Nickel High Rise Faucet
Stainless Steel Sink 33x22x8
One USB Receptacle
30" Black Free-Standing Gas or Electric Range
Power Range Hood with Fan and Light
18 Cu. Ft. Black Frost-Free Refrigerator w/Top Freezer

Baths

60" Fiberglass Tub/Showers
Tub/Shower Curtain and Curved Rod
Dual Flush Elongated Hi-Rise Toilets
Square China Sinks with Overflow and Pop-Up Drain
Bevel Edge Mirrors
Empire Brushed Nickel Faucets
Structured Flow Anti-Scald Valves on Showers and Tubs

Cabinetry

KCMA Certified Cabinets
Hardwood Wrapped Mission Cabinet Doors with Full Overlay
Hardwood Wrapped Cabinet Face Frames and Stiles
5-Piece Drawer Fronts
Brushed Nickel Cabinet Pulls Hardware
Soft Close Hidden Cabinet Hinges
Base and Wall Cabinets with Adjustable Shelves
100# Undermount Soft Close Drawer Guides
Laminate Countertops with Crescent Edge
4" Laminate Backsplash
36" High Vanities

CUSTOMER CONTACT

Notes:

PRINTABLE INFO SHEET

Series: Westlake MOD

Model: 3WM1009-P



Standards & Features (continued)

Utilities

200 AMP Electrical Service
Plumb and Wire for Washer
Wire and Vent for Dryer
Water Shut Offs Throughout
Main Water Shut-Off
One Exterior Water Faucet (Frost Free)
Gas Lines Stubbed
Drain Lines Stubbed
5-Wire Thermostat
Copper Wiring Throughout

Insulation

Ceiling R-38 Avg. Blown Insulation
Walls R-19 Fiberglass Insulation

Flooring

Take Away Shaw Carpet with ShawGuard Carpet Protector
Rebond Carpet Pad with Tackstrip Carpet Installation
Shaw Vinyl Floor Coverings

Bedrooms

Wire Shelving in Closets
Switched Light in All Walk-In Closets

Construction

2x10 Floor Joist, Double Rim Joists
3/4" OSB Decking*
2x6 Bottom Plate
Double 2x6 Top Plate Exterior Walls
2x6 Exterior Walls 16" on Center**
82" Window Headers
40# Roof Load
2-10 Extended Warranty
**Spacing for Framing Members may vary

Construction (continued)

due to Design Requirements

CUSTOMER CONTACT

Notes:
