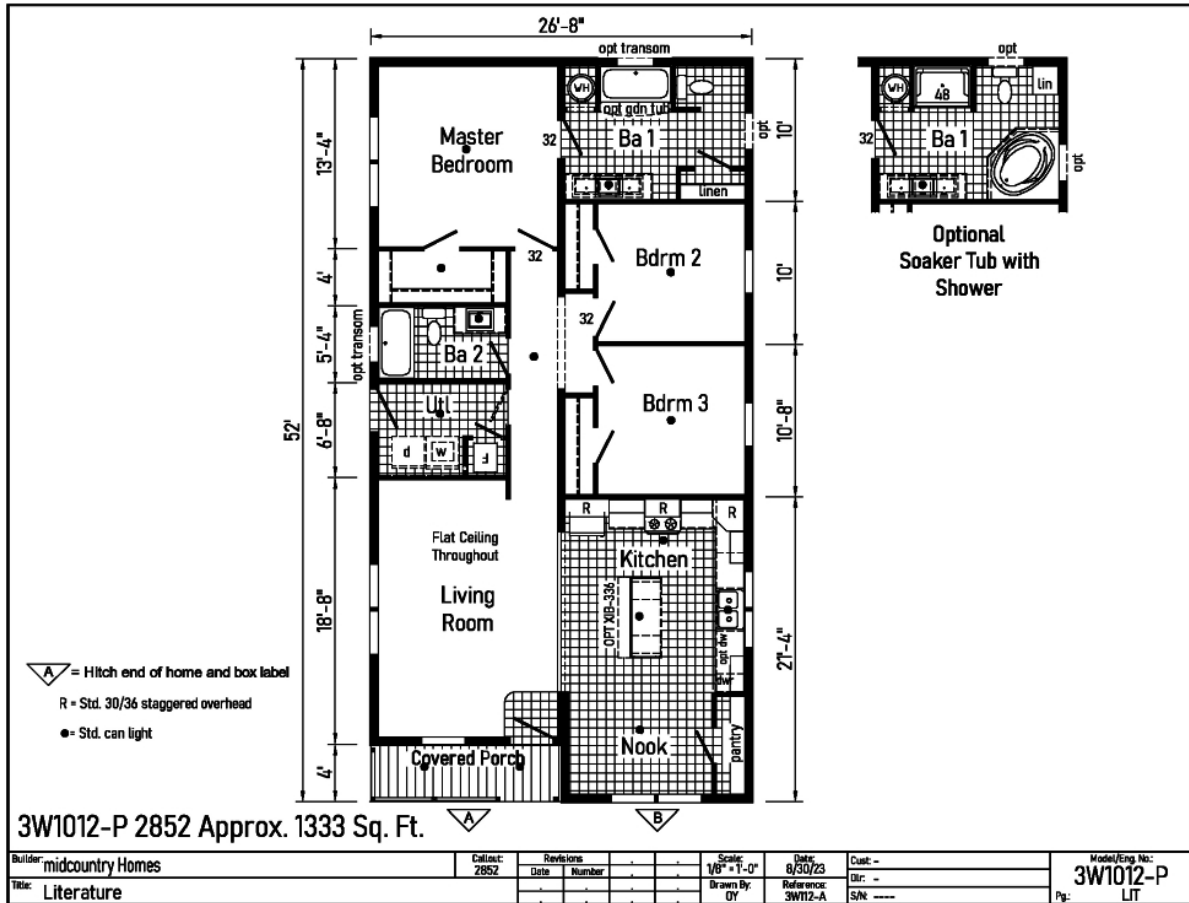


PRINTABLE INFO SHEET

Series: Westlake Ranch Homes

Model: 3W1012-P



About This Model

Style: Ranch / Bedrooms: 3 / Bathrooms: 2 / Square Feet: 1333

CUSTOMER CONTACT

Notes: _____

PRINTABLE INFO SHEET

Series: Westlake Ranch Homes

Model: 3W1012-P



Standards & Features

Interior

- Primed Drywall Throughout Orange Peel Finish
- 8'-0" Flat Ceiling Orange Peel Finish
- Recessed LED Lights
- Pendant Dining Room Light
- 2-Panel White Painted Craftsman Interior Doors
- Pre-Hung Doors with Mortise Hinges
- Metal Interior Passage Sets
- Window Valances
- 1" Mini Blinds Throughout
- Smoke Detectors with Battery Back-Up
- Wire Shelving in Closets
- White Painted Mouldings Throughout
- Flat 2 1/4" Window and Door Casing
- Flat 3 1/2" Baseboards

Exterior

- Black Gatsby Light at Front and Rear Door
- Vinyl Dutch Lap Siding
- Vinyl Insulated Windows with Low-E Glass
- Lineals Front Door Side
- GFI-Protected Exterior Receptacle at Each Door
- O.S.B. Wall & Roof Sheathing Fixed Roof
- 12" Overhangs and Eaves (Ranch)
- 4" Overhangs and 12" Eaves (Single)
- 3-Tab Shingles
- Ridge Vent Roof Ventilation System
- Ice Shield
- 3/0x6/8 Fiberglass 6-Panel Front and Rear
- Door w/ Deadbolt Keyed Alike Locksets

Construction

- Transverse Floor System on 16" Center*

Construction (continued)

- 3/4" OSB Decking*
- 2x6 Floor Joist on 14 and 28 Wide Models
- 2x8 Floor Joists on 16 and 32 Wide Models
- 2x6 Exterior Walls on 16" Center*
- 82" Window Headers
- 30# Roof Load

Kitchen

- Empire Brushed Nickel High Rise Faucet
- Stainless Steel Sink 33x22x8
- One USB Receptacle
- 30" Black Free-Standing Gas Range
- Power Range Hood with Fan and Light
- 18 Cu. Ft. Black Frost-Free Refrigerator w/Top Freezer

Baths

- 60" Fiberglass Tub/Showers Tub/Shower Curtain and Curved Rod
- Dual Flush Elongated Hi-Rise Toilets
- China Stool, Tank, and Lid
- Square China Sinks with Overflow & Pop-Up Drain
- Bevel Edge Mirrors
- Empire Brushed Nickel Faucets
- Anti-Scald Valves on Showers and Tubs

Cabinetry

- KCMA Certified Cabinets
- Hardwood Wrapped Mission Cabinet Doors with Full Overlay
- Hardwood Wrapped Cabinet Face Frames and Stiles
- 5-Piece Drawer Fronts
- Brushed Nickel Cabinet Pulls Hardware
- Soft Close Hidden Cabinet Hinges
- Base & Wall Cabinets with Adjustable Shelves

CUSTOMER CONTACT

Notes:

PRINTABLE INFO SHEET

Series: Westlake Ranch Homes

Model: 3W1012-P



Standards & Features (continued)

Cabinetry (continued)

100# Undermount Soft Close Drawer Guides

Laminate Countertops with Crescent Edge

4" Laminate Backsplash

36" High Vanities

Bedrooms

Wire Shelving in Closets

Switched Light in All Walk-In Closets

Flooring

Take Away Shaw Carpet with ShawGuard Carpet Protector

Rebond Carpet Pad with Tackstrip Carpet Installation

Shaw Vinyl Floor Coverings

Utilities

100 AMP Electrical Service

Plumb and Wire for Washer

Wire & Vent for Dryer

Water Shut Offs Throughout

Main Water Shut-Off

One Exterior Water Faucet (Frost Free)

30 Gallon Electric Water Heater with Pan

Gas Furnace

5-Wire Thermostat

Copper Wiring Throughout

Insulation

Ceiling R-30 Avg. Blown Insulation

Walls R-19 Fiberglass Insulation

Floor R-11 Fiberglass Insulation

**Spacing for Framing Members may vary

due to Design Requirements

CUSTOMER CONTACT

Notes:
