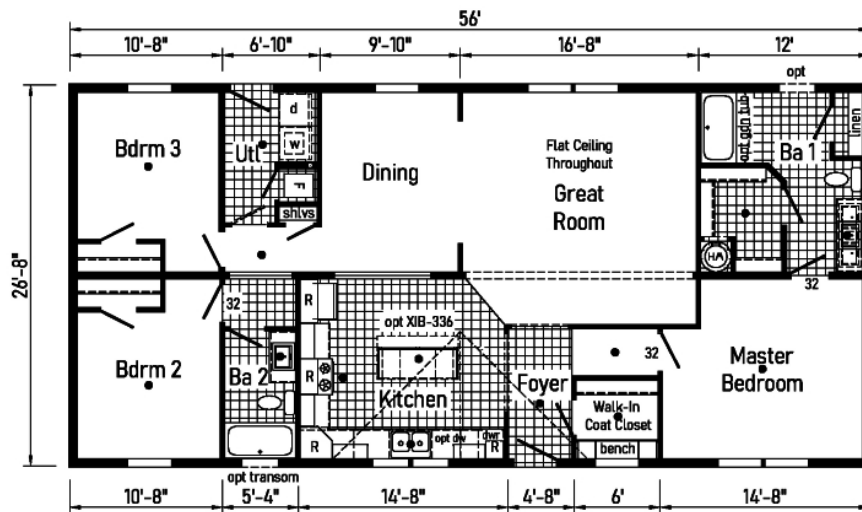


PRINTABLE INFO SHEET

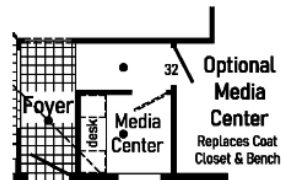
Series: Westlake Ranch Homes

Model: 3W1016-P



3W1016-P 2856 Approx. 1493 Sq. Ft.

R = Std. 30/36 staggered overhead
● = Std. can light



Builder: midcountry Homes	Callout: 2856	Revisions: Date Number	Scale: 1/8" = 1'-0"	Date: 8/30/23	Cost: -	Model/Eng. No: 3W1016-P
Title: Literature			Drawn By: OY	Reference: 3W116-A	Dir: -	LIT
					SN: -	Pg: -

About This Model

Style: Ranch / Bedrooms: 3 / Bathrooms: 2 / Square Feet: 1493

CUSTOMER CONTACT

Notes:

PRINTABLE INFO SHEET

Series: Westlake Ranch Homes

Model: 3W1016-P



Standards & Features

Interior

Primed Drywall Throughout Orange Peel Finish
8'-0" Flat Ceiling Orange Peel Finish
Recessed LED Lights
Pendant Dining Room Light
2-Panel White Painted Craftsman Interior Doors
Pre-Hung Doors with Mortise Hinges
Metal Interior Passage Sets
Window Valances
1" Mini Blinds Throughout
Smoke Detectors with Battery Back-Up
Wire Shelving in Closets
White Painted Mouldings Throughout
Flat 2 1/4" Window and Door Casing
Flat 3 1/2" Baseboards

Exterior

Black Gatsby Light at Front and Rear Door
Vinyl Dutch Lap Siding
Vinyl Insulated Windows with Low-E Glass
Lineals Front Door Side
GFI-Protected Exterior Receptacle at Each Door
O.S.B. Wall & Roof Sheathing Fixed Roof
12" Overhangs and Eaves (Ranch)
4" Overhangs and 12" Eaves (Single)
3-Tab Shingles
Ridge Vent Roof Ventilation System
Ice Shield
3/0x6/8 Fiberglass 6-Panel Front and Rear
Door w/ Deadbolt Keyed Alike Locksets

Construction

Transverse Floor System on 16" Center*

Construction (continued)

3/4" OSB Decking*
2x6 Floor Joist on 14 and 28 Wide Models
2x8 Floor Joists on 16 and 32 Wide Models
2x6 Exterior Walls on 16" Center*
82" Window Headers
30# Roof Load

Kitchen

Empire Brushed Nickel High Rise Faucet
Stainless Steel Sink 33x22x8
One USB Receptacle
30" Black Free-Standing Gas Range
Power Range Hood with Fan and Light
18 Cu. Ft. Black Frost-Free Refrigerator w/Top Freezer

Baths

60" Fiberglass Tub/Shower Tub/Shower Curtain and Curved Rod
Dual Flush Elongated Hi-Rise Toilets
China Stool, Tank, and Lid
Square China Sinks with Overflow & Pop-Up Drain
Bevel Edge Mirrors
Empire Brushed Nickel Faucets
Anti-Scald Valves on Showers and Tubs

Cabinetry

KCMA Certified Cabinets
Hardwood Wrapped Mission Cabinet Doors with Full Overlay
Hardwood Wrapped Cabinet Face Frames and Stiles
5-Piece Drawer Fronts
Brushed Nickel Cabinet Pulls Hardware
Soft Close Hidden Cabinet Hinges
Base & Wall Cabinets with Adjustable Shelves

CUSTOMER CONTACT

Notes:

PRINTABLE INFO SHEET

Series: Westlake Ranch Homes

Model: 3W1016-P



Standards & Features (continued)

Cabinetry (continued)

100# Undermount Soft Close Drawer Guides

Laminate Countertops with Crescent Edge

4" Laminate Backsplash

36" High Vanities

Bedrooms

Wire Shelving in Closets

Switched Light in All Walk-In Closets

Flooring

Take Away Shaw Carpet with ShawGuard Carpet Protector

Rebond Carpet Pad with Tackstrip Carpet Installation

Shaw Vinyl Floor Coverings

Utilities

100 AMP Electrical Service

Plumb and Wire for Washer

Wire & Vent for Dryer

Water Shut Offs Throughout

Main Water Shut-Off

One Exterior Water Faucet (Frost Free)

30 Gallon Electric Water Heater with Pan

Gas Furnace

5-Wire Thermostat

Copper Wiring Throughout

Insulation

Ceiling R-30 Avg. Blown Insulation

Walls R-19 Fiberglass Insulation

Floor R-11 Fiberglass Insulation

**Spacing for Framing Members may vary
due to Design Requirements

CUSTOMER CONTACT

Notes:
