

## PRINTABLE INFO SHEET

Series: Westlake Ranch Homes

Model: 3W1052-P



## About This Model

Style: Ranch / Bedrooms: 3 / Bathrooms: 2 / Square Feet: 1493

## CUSTOMER CONTACT

Notes:

---

---

---

---

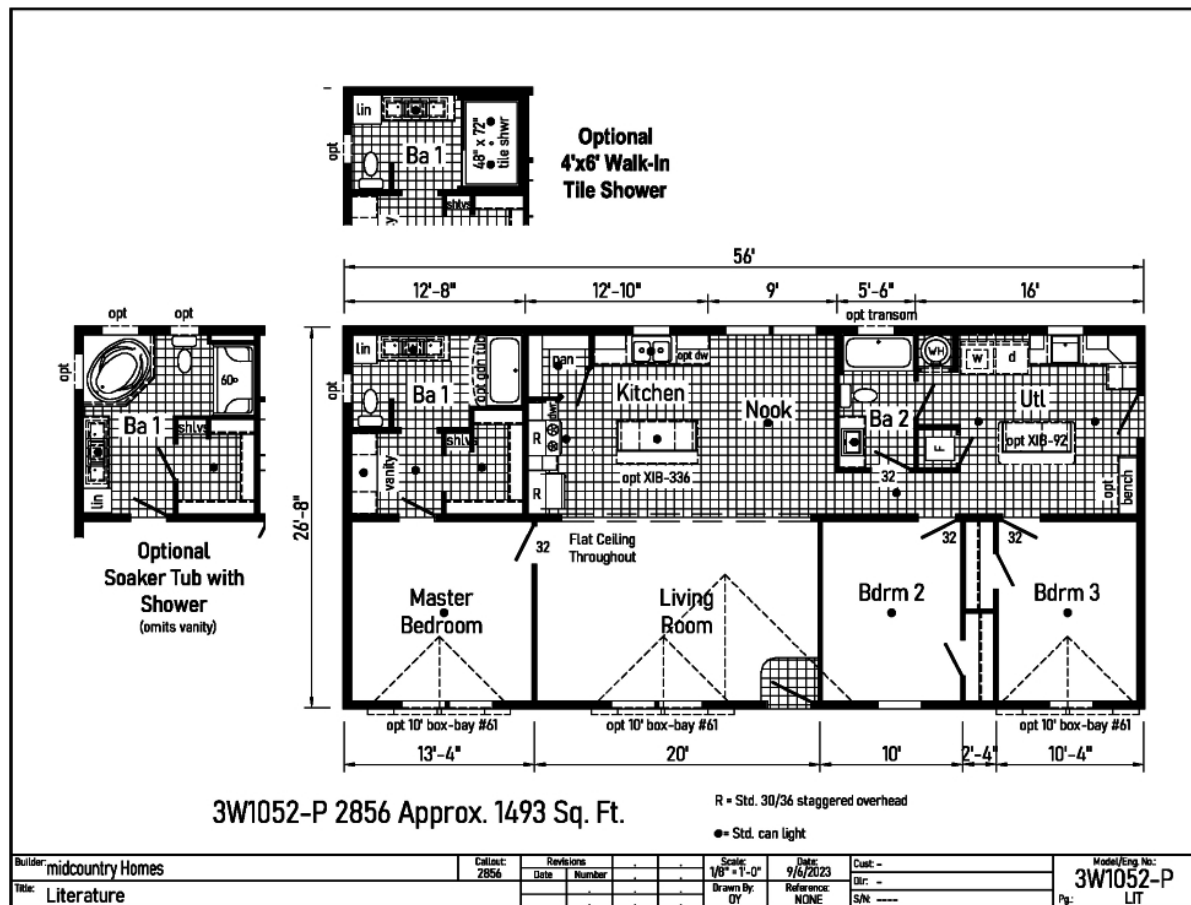
## PRINTABLE INFO SHEET

Series: Westlake Ranch Homes

Model: 3W1052-P



## Floorplan



## CUSTOMER CONTACT

Notes:

---



---



---



---



## PRINTABLE INFO SHEET

**Series: Westlake Ranch Homes**

**Model: 3W1052-P**



## Standards & Features

### Interior

Primed Drywall Throughout Orange Peel Finish  
8'-0" Flat Ceiling Orange Peel Finish  
Recessed LED Lights  
Pendant Dining Room Light  
2-Panel White Painted Craftsman Interior Doors  
Pre-Hung Doors with Mortise Hinges  
Metal Interior Passage Sets  
Window Valances  
1" Mini Blinds Throughout  
Smoke Detectors with Battery Back-Up  
Wire Shelving in Closets  
White Painted Mouldings Throughout  
Flat 2 1/4" Window and Door Casing  
Flat 3 1/2" Baseboards

### Exterior

Black Gatsby Light at Front and Rear Door  
Vinyl Dutch Lap Siding  
Vinyl Insulated Windows with Low-E Glass  
Lineals Front Door Side  
GFI-Protected Exterior Receptacle at Each Door  
O.S.B. Wall & Roof Sheathing Fixed Roof  
12" Overhangs and Eaves (Ranch)  
4" Overhangs and 12" Eaves (Single)  
3-Tab Shingles  
Ridge Vent Roof Ventilation System  
Ice Shield  
3/0x6/8 Fiberglass 6-Panel Front and Rear  
Door w/ Deadbolt Keyed Alike Locksets

### Construction

Transverse Floor System on 16" Center\*

### Construction (continued)

3/4" OSB Decking\*  
2x6 Floor Joist on 14 and 28 Wide Models  
2x8 Floor Joists on 16 and 32 Wide Models  
2x6 Exterior Walls on 16" Center\*  
82" Window Headers  
30# Roof Load

### Kitchen

Empire Brushed Nickel High Rise Faucet  
Stainless Steel Sink 33x22x8  
One USB Receptacle  
30" Black Free-Standing Gas Range  
Power Range Hood with Fan and Light  
18 Cu. Ft. Black Frost-Free Refrigerator w/Top Freezer

### Baths

60" Fiberglass Tub/Shower Tub/Shower Curtain and Curved Rod  
Dual Flush Elongated Hi-Rise Toilets  
China Stool, Tank, and Lid  
Square China Sinks with Overflow & Pop-Up Drain  
Bevel Edge Mirrors  
Empire Brushed Nickel Faucets  
Anti-Scald Valves on Showers and Tubs

### Cabinetry

KCMA Certified Cabinets  
Hardwood Wrapped Mission Cabinet Doors with Full Overlay  
Hardwood Wrapped Cabinet Face Frames and Stiles  
5-Piece Drawer Fronts  
Brushed Nickel Cabinet Pulls Hardware  
Soft Close Hidden Cabinet Hinges  
Base & Wall Cabinets with Adjustable Shelves

## CUSTOMER CONTACT

Notes:

---

---

---

---

## PRINTABLE INFO SHEET

**Series: Westlake Ranch Homes**

**Model: 3W1052-P**



## Standards & Features (continued)

### Cabinetry (continued)

100# Undermount Soft Close Drawer Guides

Laminate Countertops with Crescent Edge

4" Laminate Backsplash

36" High Vanities

### Bedrooms

Wire Shelving in Closets

Switched Light in All Walk-In Closets

### Flooring

Take Away Shaw Carpet with ShawGuard Carpet Protector

Rebond Carpet Pad with Tackstrip Carpet Installation

Shaw Vinyl Floor Coverings

### Utilities

100 AMP Electrical Service

Plumb and Wire for Washer

Wire & Vent for Dryer

Water Shut Offs Throughout

Main Water Shut-Off

One Exterior Water Faucet (Frost Free)

30 Gallon Electric Water Heater with Pan

Gas Furnace

5-Wire Thermostat

Copper Wiring Throughout

### Insulation

Ceiling R-30 Avg. Blown Insulation

Walls R-19 Fiberglass Insulation

Floor R-11 Fiberglass Insulation

\*\*Spacing for Framing Members may vary

due to Design Requirements

## CUSTOMER CONTACT

Notes:

---

---

---

---