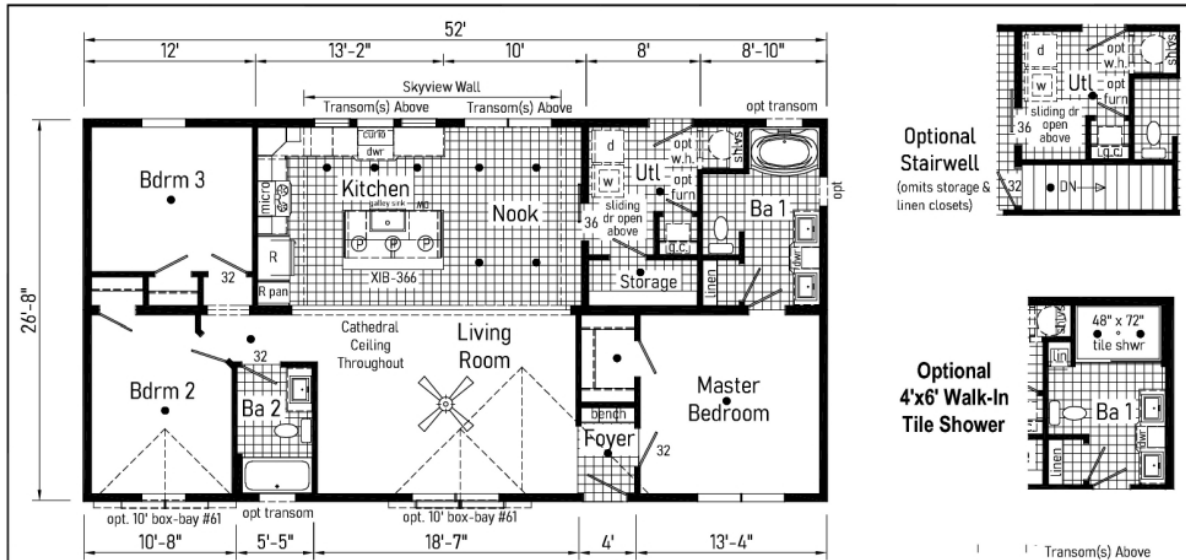


PRINTABLE INFO SHEET

Series: Westlake Sapphire
Model: 3WM1413-P Sapphire



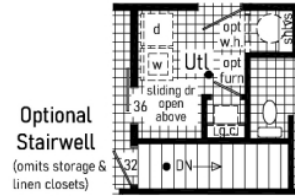
3WM1413-P 2852 Approx. 1387 Sq. Ft.

Only Available with Cathedral Ceiling

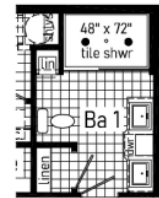
- R = Std. 30/36 staggered overhead
- = Std. can light
- Ⓟ = Std. pendant light

Note: Optional furnace not available with fixed cathedral trusses.

Note: Because of varying state requirements and optional equipment, some or all of the utility locations might change per floor plan (ie: furnaces, w/h, stairwell). Consult your sales representative for exact specifications.



Optional Stairwell
(omits storage & linen closets)



Optional 4'x6' Walk-In Tile Shower



Alternate Kitchen
(omits curio cabinet)

Westlake Sapphire

Builder: midcountry Homes	Address: 337 Liberty Street Dorchester, WI 54425	Callout: 2852	Revisions:	Scale: 1/8" = 1'-0"	Date: 12/15/2023	Cust.:
Title: Literature			Drawn By: KH	Reference: NONE	Dir: S/N	Model/Eng. No: 3WM1413-P LIT

About This Model

Style: MOD / Bedrooms: 3 / Bathrooms: 2 / Square Feet: 1387

CUSTOMER CONTACT

Notes: _____

PRINTABLE INFO SHEET

Series: Westlake Sapphire
Model: 3WM1413-P Sapphire



Standards & Features

Interior

Primed Drywall Throughout Orange Peel Finish
8'-0" Flat Ceiling Orange Peel Finish
Recessed LED Lights
Pendant Dining Room Light
2-Panel White Painted Craftsman Interior Doors
Pre-Hung Doors with Mortise Hinges
Metal Interior Passage Sets
Window Valances
1" Mini Blinds Throughout
Smoke Detectors with Battery Back-Up
Wire Shelving in Closets
White Painted Mouldings Throughout
Flat 2 1/4" Window and Door Casing
Flat 3 1/2" Baseboards

Exterior

Black Gatsby Light at Front and Rear Door
Vinyl Dutch Lap Siding
Vinyl Insulated Windows with Low-E Glass
Lineals Front Door Side
GFI-Protected Exterior Receptacle at Each Door
O.S.B. Wall & Roof Sheathing Fixed Roof
12" Overhangs and Eaves (Ranch)
4" Overhangs and 12" Eaves (Single)
3-Tab Shingles
Ridge Vent Roof Ventilation System
Ice Shield
3/0x6/8 Fiberglass 6-Panel Front and Rear
Door w/ Deadbolt Keyed Alike Locksets

Construction

Transverse Floor System on 16" Centers*

Construction (continued)

3/4" OSB Decking*
2x6 Floor Joist on 14 and 28 Wide Models
2x8 Floor Joists on 16 and 32 Wide Models
2x6 Exterior Walls on 16" Centers*
82" Window Headers
30# Roof Load

Kitchen

Empire Brushed Nickel High Rise Faucet
Stainless Steel Sink 33x22x8
One USB Receptacle
30" Black Free-Standing Gas Range
Power Range Hood with Fan and Light
18 Cu. Ft. Black Frost-Free Refrigerator w/Top Freezer

Baths

60" Fiberglass Tub/Shower Tub/Shower Curtain and Curved Rod
Dual Flush Elongated Hi-Rise Toilets
China Stool, Tank, and Lid
Square China Sinks with Overflow and Pop-Up Drain
Bevel Edge Mirrors
Empire Brushed Nickel Faucets
Anti-Scald Valves on Showers and Tubs

Cabinetry

KCMA Certified Cabinets
Hardwood Wrapped Mission Cabinet Doors with Full Overlay
Hardwood Wrapped Cabinet Face Frames and Stiles
5-Piece Drawer Fronts
Brushed Nickel Cabinet Pulls Hardware
Soft Close Hidden Cabinet Hinges
Base & Wall Cabinets with Adjustable Shelves

CUSTOMER CONTACT

Notes:

PRINTABLE INFO SHEET

Series: Westlake Sapphire
Model: 3WM1413-P Sapphire



Standards & Features (continued)

Cabinetry (continued)

100# Undermount Soft Close Drawer Guides
Laminate Countertops with Crescent Edge
4" Laminate Backsplash
36" High Vanities

Bedrooms

Wire Shelving in Closets
Switched Light in All Walk-In Closets

Flooring

Take Away Shaw Carpet with ShawGuard Carpet Protector
Rebond Carpet Pad with Tackstrip Carpet Installation
Shaw Vinyl Floor Coverings

Utilities

100 AMP Electrical Service
Plumb and Wire for Washer
Wire and Vent for Dryer
Water Shut Offs Throughout
Main Water Shut-Off
One Exterior Water Faucet (Frost Free)
30 Gallon Electric Water Heater with Pan
Gas Furnace
5-Wire Thermostat
Copper Wiring Throughout

Insulation

Ceiling R-30 Avg. Blown Insulation
Walls R-19 Fiberglass Insulation
Floor R-11 Fiberglass Insulation

Items in bold are the Sapphire Additional Features

8'-0" Cathedral Ceiling (Multi Sections)

Skyview Wall with Transoms
Ceiling Fan in Living Room

8'-0" Cathedral Ceiling (Multi Sections) (continued)

Foyer Accent Cabinet and Wall
3 Pendant Lights over Island
Pearl Appliance Package Stainless Steel Gas
Stainless Steel Over the Range Microwave
Full Ceramic Backsplash on Range Wall
Sliding Interior Door in Nook
Additional LED Lights in Nook
Accent Cabinet
30" Galley Sink w/ Spring Pull Out Faucet
Garden Tub/Shower in Master Bath
Double Sinks in Master Bath
2 Light Bath Fixtures Over Lav Mirrors
Accent Cabinet

****Spacing for Framing Members may vary due to Design Requirements**

CUSTOMER CONTACT

Notes:
